



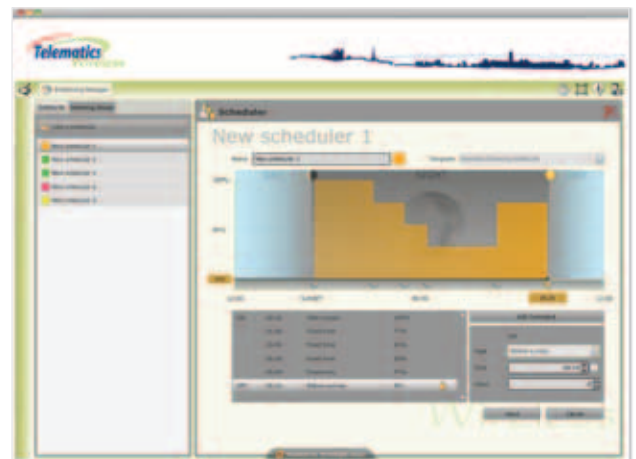
T-Light CMS Control and Management Software

T-Light™ is Telematics Wireless's solution for smart lighting control and monitoring systems. It enables utilities or maintenance companies to benefit from an improved, reliable and cost-effective tool for controlling and managing street lights.

T-Light CMS-Pro is a powerful and intuitive fully-featured management solution for smart lighting systems, utilizing the *Streetlight.Vision* software platform. It is applicable for all T-Light systems: T-Light Basic, T-Light Pro and T-Light Galaxy.

KEY FEATURES

- A powerful web-based server application
- Controls and monitors luminaires remotely
- Efficiently manages assets over large geographic areas
- Configurable ON/OFF/dimming control via user-friendly scheduling app for individual and group of lights
- Dynamic map display of each luminaire and its parameters, including optional overall power consumption
- Encrypted data management system for collecting, saving, and presenting current and historical information
- Real-time individual and group broadcast Control – segments, junctions, neighborhoods, and more
- Real-time alarms - delivered immediately
- Advanced configurable reporting mechanism
- Warns when luminaires approach end of life cycle
- Energy-saving analysis
- Detailed failure analysis reports
- Secure system access and user management
- May be deployed locally or provided as a cloud-based service



Scheduler Screen – Daily schedule profiler enabling pre-defined dimming levels



Equipment Inventory Screen – specific luminaire data



GIS Screen — Based on a Google map, the GIS option displays the geographic location of each light pole with its dynamic parameters



Dashboard Screen — access to various CMS functions

Company Overview

Telematics Wireless is a recognized leader in the delivery of robust, reliable and advanced energy and water resource management systems based on RF wireless networks. Our solutions support a wide spectrum of applications for many aspects of our daily life, increasing their efficiency, reliability and cost-effectiveness.

With over 15 years of proven experience, Telematics has delivered and installed a spectrum of cutting-edge wireless systems for Automatic Meter Readings (AMR), Advanced Metering Infrastructure (AMI), Energy Resource Management, including Smart Grid, Street and other lighting systems, location-based services, asset tracking and monitoring, and Electronic Toll Collection.

Millions of Telematics Wireless network devices and systems have been installed worldwide.

Telematics Wireless is a fully owned subsidiary of ST Electronics (Info-Comm Systems) Pte. Ltd.

Competitive Edge

- AMR track record: millions of AMR products sold since 2002
- Long-term providers of state-of-the-art M2M radio-based solutions from module-to-system level for various applications
- The world leading terrestrial location-based systems provider. Global deployment
- Field-proven Smart Grid, based on cutting edge wireless solutions and Power Line Communications (PLC)
- Globally deployed Tnet™ mesh wireless networks

T-Light™ is a trademark of Telematics Wireless. Other company and product names mentioned in this document may be trademarks or registered trademarks of their respective owners. Telematics Wireless reserves the right to make changes to the materials and products mentioned in this document without prior notice.



www.telematics-wireless.com
sales@tlmw.com

Telematics Wireless Ltd.
 26 Hamelacha St.
 POB 1911 Holon 5811801, Israel
 Tel: +972-3-557 5700
 Fax: +972-3-557 5703

Telematics Wireless USA Corp.
 7750 N. MacArthur Blvd.
 Ste 120-274, Irving, TX 75063
 Tel: (718) 640 2750
 Fax: (718) 640 2751

SALES:
sales.tlight@tlmw.com
 Tel: (650) 276-8478